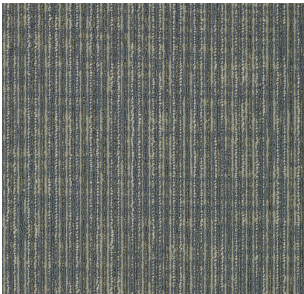


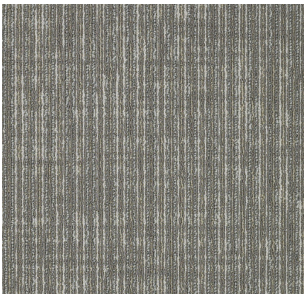
84400 Wedge



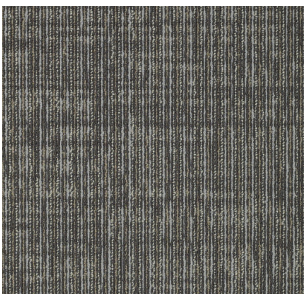
84500 Pulley



84505 Screw



84515 Lever



84700 Spark

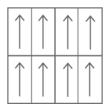


84510 Axel

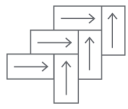
Style Name	SUCCESSIVE	
Style Number	54884	
Product Type	Carpet Tile	
Construction	Multi-Level Pattern Loop	
Fiber	100% Eco Solution Q100™ Nylon	
Dye Method	Solution Dyed	
Primary Backing	Synthetic	
Secondary Backing	Ecoworx	
Traffic Rating	Heavy	
Protective Treatments	SSP Shaw Soil Protection	
	U.S.	Metric
Product Size	18 in x 36 in	45.72 cm x 91.44 cm
Area Per Carton	45 ft²	4.18 m²
Pieces Per Carton	10	
Gauge	1/10 in	39.37 per 10 cm
Stitches	11 per in	44 per 10 cm
Finished Pile Thickness	0.069 in	1.75 mm
Average Density	8348 oz/yd³	
Total Thickness	0.208 in	5.28 mm
Tufted Weight	16 oz/yd²	542.5 g/m²



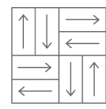
Recommended Installation Methods



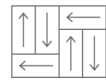
Monolithic



Herringbone



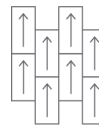
Basketweave



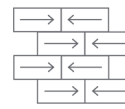
Half Basketweave



Boxed In



Ashlar



Brick

Performance Testing

Pill Test	Pass
Radiant Panel	Class I
NBS Smoke	Less than 450
Electrostatic Propensity	Less than 3.5 kv
CRI Greenlabel Plus	GLP9968
ADA Compliance	>0.6, meets the recommended static coefficient of friction for ADA walking surfaces and accessible routes

Warranties

Carpet Tile Lifetime Commercial Limited Warranty with Stain and Color

Environmental

Recycled Content **Pre-consumer - 37%, Post-consumer - 0%**

Specifications are subject to nominal manufacturing variance. Material supply and/or manufacturing processes may necessitate changes without notice.