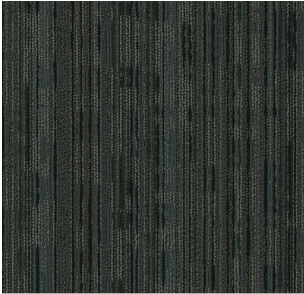




210 Twist



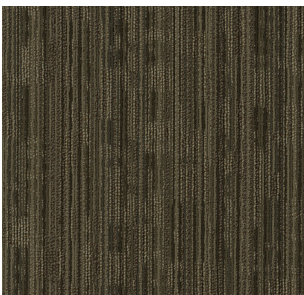
400 Bunch



510 Bind



700 Fold



706 Wrap

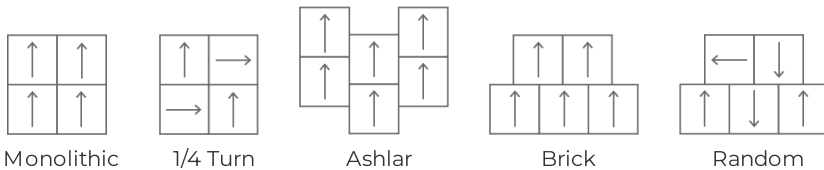


500 Pleat

Style Name	STACK	
Style Number	54920	
Product Type	Carpet Tile	
Dye Method	Solution Dyed	
Primary Backing	Synthetic	
Traffic Rating	Moderate	
	U.S.	Metric
Product Size	24 in x 24 in	60.96 cm x 60.96 cm
Area Per Carton	80 ft²	7.43 m²
Pieces Per Carton	20	
Gauge	1/10 in	39.37 per 10 cm
Stitches	9 per in	37 per 10 cm
Finished Pile Thickness	0.121 in	3.07 mm
Average Density	4760 oz/yd³	
Total Thickness	0.242 in	6.15 mm
Tufted Weight	16 oz/yd²	542.5 g/m²



Recommended Installation Methods



Performance Testing

Pill Test	Pass
Radiant Panel	Class I
NBS Smoke	Less than 450
CRI Greenlabel Plus	GLP8233
ADA Compliance	>0.6, meets the recommended static coefficient of friction for ADA walking surfaces and accessible routes

Test Reports may be included or listed by the manufacturing/inventory style number as opposed to the noted selling style number.

Warranties

Carpet Tile 15 year Commercial Limited Warranty with Stain and Color for StrataWorx

Specifications are subject to nominal manufacturing variance. Material supply and/or manufacturing processes may necessitate changes without notice.